

Modeling the Heterogeneity of Electrosensory Afferents in Electric Fish

Masterthesis

der Mathematisch-Naturwissenschaftlichen Fakultät
der Eberhard Karls Universität Tübingen

Erstkorrektor: Prof. Dr. Philipp Berens

Zweitkorrektor: Prof. Dr. Jan Benda

Lehrbereich für Neuroethologie

vorgelegt von

Alexander Mathias Ott

Abgabedatum: 21.09.2020

Eigenständigkeitserklärung

Hiermit erkläre ich, dass ich die vorgelegte Arbeit selbstständig verfasst habe und keine anderen als die angegebenen Quellen und Hilfsmittel benutzt habe.

Außerdem erkläre ich, dass die eingereichte Arbeit weder vollständig noch in wesentlichen Teilen Gegenstand eines anderen Prüfungsverfahrens gewesen ist.

Unterschrift

Ort, Datum

Contents

1	Zusammenfassung	3
2	Abstract	3
3	Introduction	4
4	Materials and Methods	7
4.1	Cell recordings	7
4.2	Stimulus Protocols	8
4.3	Cell Characteristics	9
4.4	Leaky Integrate-and-Fire Model	11
4.5	Fitting of the Model	14
5	Results	16
5.1	Model Examples	16
5.2	Population Comparison	19
5.3	Random Model Population	25
6	Discussion	31
6.1	Model fit	31
6.2	Heterogeneous Population	32
6.3	Conclusion	32

Not to forget: TODO

- update the colors in all plots to be consistent.
- update number of cells / fish etc
- check time form in text results present!

1 Zusammenfassung

2 Abstract

3 Introduction

(TODO: A complete characterisation of their activity has been the subject of previous studies (Gabbiani et al., 1996; Gussin et al., 2007; Scheich et al., 1973; Wessel et al., 1996; Xu et al., 1996; Zakon, 1986) ???)

The environment of an organism holds important information that it needs to survive. Information about predators to avoid, food to find and potential mates. The ability to sense and process this information is of vital importance for any organism. At the same time the environment also contains a lot of information that is irrelevant to an organism. Barlow et al. (1961) suggested already that the sensory systems of an organism should be specialized to extract the information it needs while filtering out the noise and irrelevant information, to efficiently use the limited coding capacity of the sensory systems.

One interesting model system for questions adaptive signal processing is the electric fish *Apteronotus leptorhynchus* (Brown ghost knife fish). *A. leptorhynchus* generate a sinusoidal electric field with the electric organ in their tail enabling them to use active electroreception which they use to find prey and communicate with each other (Maciver et al. (2001), Zupanc et al. (2006)). The different use cases of this electric organ discharge (EOD) come with the necessity to detect a wide range of different amplitude modulations (AMs). Electrolocation of object in the surrounding water like small prey or rocks cause small low frequency AMs (Babineau et al., 2007). At the same time other electric fish can cause stronger and higher frequency AMs through interference between the electric fields and their communication signals like chirps, short increases in their EOD frequency (Zupanc et al., 2006). This means that the electroreceptors need to be able to encode a wide range of changes in EOD amplitude, in speed as well as strength. The EOD and its AMs are encoded by electroreceptor organs in the skin. *A. leptorhynchus* have two kinds of tuberous electrosensory organs: the T and P type units (Scheich et al., 1973). The T units (time coder) are strongly phase locked to the EOD and fire regularly once every EOD period. They encode the phase of the EOD in their spike timing. The P units (probability coders) on the other hand do not fire every EOD period. Instead they fire irregularly with a certain probability that depends on the EOD amplitude. That way they encode information about the EOD amplitude in their firing probability (Scheich et al., 1973). An example of the firing behavior of a P unit is shown in figure 1. When the fish's EOD is unperturbed P units fire every few EOD periods but they have a certain variability in their firing (fig. 1 B) and show negative correlation between successive interspike intervals (ISIs)(fig. 1 C). When presented with a step increase in EOD amplitude P units show strong adaption behavior. After a strong increase in firing rate reacting to the onset of the step, the firing rate quickly decays back to a steady state (fig. 1 D). When using different sizes of steps both the onset and the steady state response scale with its size and direction of the step (fig. 1 E).

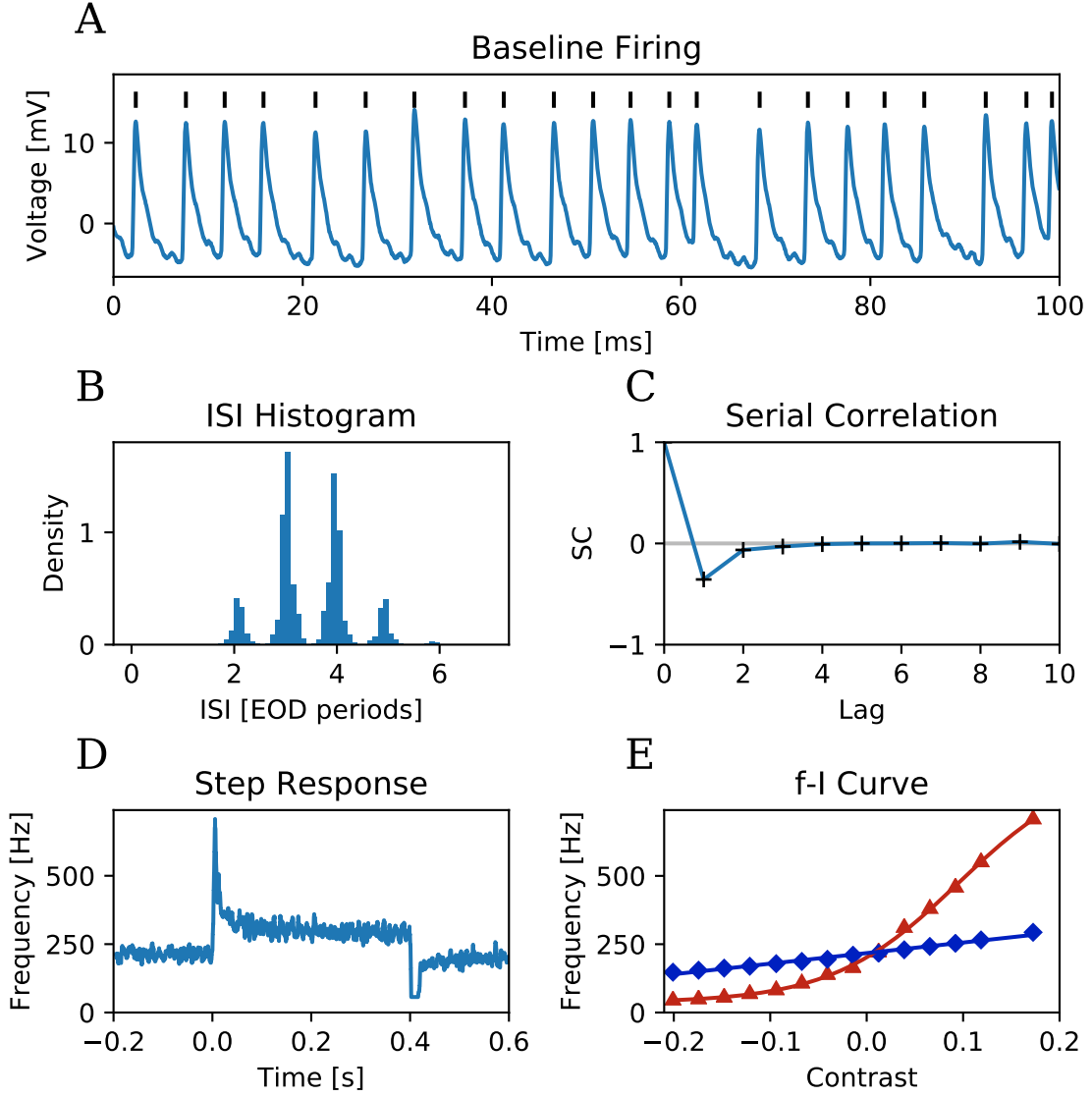


Figure 1: Example behavior of a P-unit with a high baseline firing rate and an EOD frequency of 744 Hz. **A**: A 100ms voltage trace of the baseline recording with spikes marked by the black strokes. **B**: ISI histogram showing the phase locking of the P-unit firing to the EOD period. **C**: The serial correlation of the ISIs showing the negative correlation at lag one of most P-units. **D**: The response of the p-unit to a step increase in EOD amplitude. In (TODO: color) the averaged firing frequency ($1/\text{ISI}$) averaged over 10 trials. The P-unit strongly reacts to the onset of the stimulus but very quickly adapts to the new stimulus and then shows a reduced steady state response. **E**: The onset (TODO: color) and steady-state (TODO: color) f-I curves of the neuron display the dependence of both responses on the stimulus contrast. The lines are fits with a Boltzmann (eq.: 5) and a rectified line (6) for the onset and steady state f-I curve respectively.

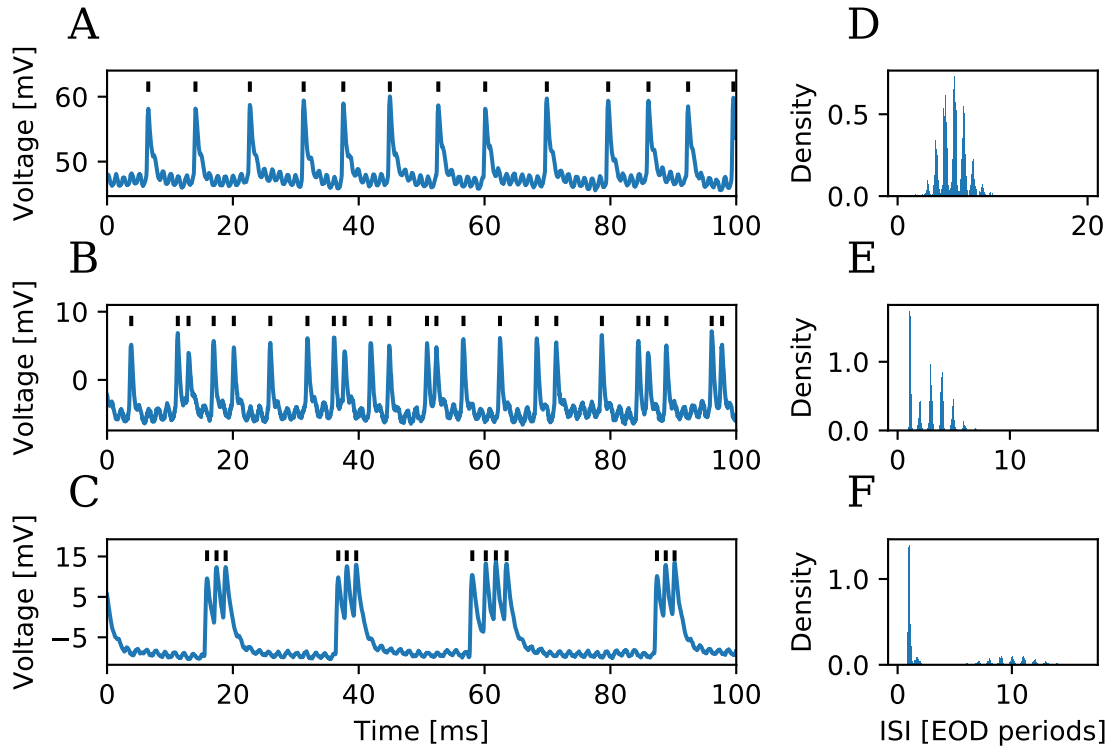


Figure 2: Variability in spiking behavior between P units under baseline conditions. **A–C** 100 ms of cell membrane voltage and **D–F** interspike interval histograms, each for three different cells. **A** and **D**: A non bursting cell with a baseline firing rate of 133 Hz (EODf: 806 Hz), **B** and **E**: A cell with some bursts and a baseline firing rate of 235 Hz (EODf: 682 Hz) and **C** and **F**: A strongly bursting cell with longer pauses between bursts (baseline rate of 153 Hz and EOD frequency of 670 Hz).

Furthermore show P-units a pronounced heterogeneity in their spiking behavior (fig. 2, Gussin et al. (2007)). Currently the spiking behavior of P-units is often split into two distinct categories of bursting and non-bursting cells (Xu et al. (1996), Chacron et al. (2004)) or the bursting behavior not considered at all (Walz, 2013), but when one is trying to understand how information is encoded in the spike trains and populations of neurons the bursts (review: Zeldenrust et al. (2018)) and general heterogeneity (Padmanabhan and Urban (2010), Tripathy et al. (2013)) are important aspects to consider. A single neuron might be an independent unit from all other neurons but through different tuning curves a full picture of the stimulus can be encoded in the population even when a single neuron only encodes a small feature space. This type of encoding is ubiquitous in the nervous system and is, for example in form of a labeled line code, used in the visual sense for color vision. Even though P-units were already modeled based on a simple leaky integrate-and-fire neuron (Chacron et al., 2001) and conductance based (Kashimori et al., 1996) and well studied (Bastian (1981), Ratnam and Nelson (2000) Benda et al. (2005)). Up to this point there is no model that tries to cover the full breadth of heterogeneity of the P unit population. Having such a model could help shed light into the population code used in the electric sense, but also of heterogeneous neuron populations in general as there are currently few model systems that have well defined heterogeneous populations. Further it could allow researchers gain a better picture how higher brain areas might process the information and get closer to the full path between sensory input and behavioral output.

4 Materials and Methods

4.1 Cell recordings

The cell recordings for this master thesis were collected as part of other previous studies (Walz (2013), Walz et al. (2014)) (TODO: ref other studies) and the recording procedure is described there but will also be repeated below. The recordings of altogether 457 p-units were inspected. Of those 88 fulfilled basic necessary requirements: including a measurement of at least 30 seconds of baseline behavior and containing at least 7 different contrasts with each at least 7 trials for the f-I curve (see below fig. 4 B). After pre-analysis of those cells an additional 15 cells were excluded because of spike detection difficulties.

The 67 used cells came from 32 *Apteronotus leptorhynchus* (brown ghost knifefish). The fish were between 11–25 cm long (15.8 ± 3.5 cm) and their electric organ discharge (EOD) frequencies ranged between 601 and 928 Hz (753 ± 82 Hz). The sex of the fish was not determined.

The in vivo intracellular recordings of P-unit electroreceptors were done in the lateral line nerve. The fish were anesthetized with MS-222 (100–130 mg/l; PharmaQ; Fordingbridge, UK) and the part of the skin covering the lateral line just behind the skull was removed, while the area was anesthetized with Lidocaine (2%; bela-pharm; Vechta, Germany). The fish were immobilized for the recordings with Tubocurarine (Sigma-Aldrich; Steinheim, Germany, 25–50 μ l of 5 mg/ml solution) and placed in the experimental tank (47 \times 42 \times 12 cm) filled with water from the fish’s home tank with a conductivity of about 300 μ S/cm and the temperature was around 28°C. All experimental protocols were approved and complied with national and regional laws (files: no. 55.2-1-54-2531-135-09 and Regierungspräsidium Tübingen no. ZP 1/13 and no. ZP 1/16) For the recordings a standard glass microelectrode (borosilicate; 1.5 mm outer diameter; GB150F-8P, Science Products, Hofheim, Germany) was used. They were pulled to a resistance of 50–100 M Ω using Model P-97 from Sutter Instrument Co. (Novato, CA, USA) and filled with 1 M KCl solution. The electrodes were controlled using microdrives (Luigs-Neumann; Ratingen, Germany) and the potentials recorded with the bridge mode of the SEC-05 amplifier (npi-electronics GmbH, Tamm, Germany) and lowpass filtered at 10 kHz.

During the recording spikes were detected online using the peak detection algorithm from Todd and Andrews (1999). It uses a dynamically adjusted threshold value above the previously detected trough. To detect spikes through changes in amplitude the threshold was set to 50% of the amplitude of a detected spike while keeping the threshold above a minimum set to be higher than the noise level based on a histogram of all peak amplitudes. Trials with bad spike detection were removed from further analysis. The fish’s EOD was recorded using two vertical carbon rods (11 cm long, 8 mm diameter) positioned in front of the head and behind its tail. The signal was amplified 200 to 500 times and band-pass filtered (3 – 1500 Hz passband, DPA2-FX, npi-electronics, Tamm, Germany). The electrodes were placed on iso-potential lines of the stimulus field to reduce the interference of the stimulus in the recording. All signals were digitized using a data acquisition board (PCI-6229; National Instruments, Austin TX, USA) at a sampling rate of 20–100 kHz (54 cells at 20 kHz, 20 at 100 kHz and 1 at 40 kHz)

The recording and stimulation was done using the ephys, efield, and efish plugins of the software RELACS (www.relacs.net). It allowed the online spike and EOD detection, pre-analysis and visualization and ran on a Debian computer.

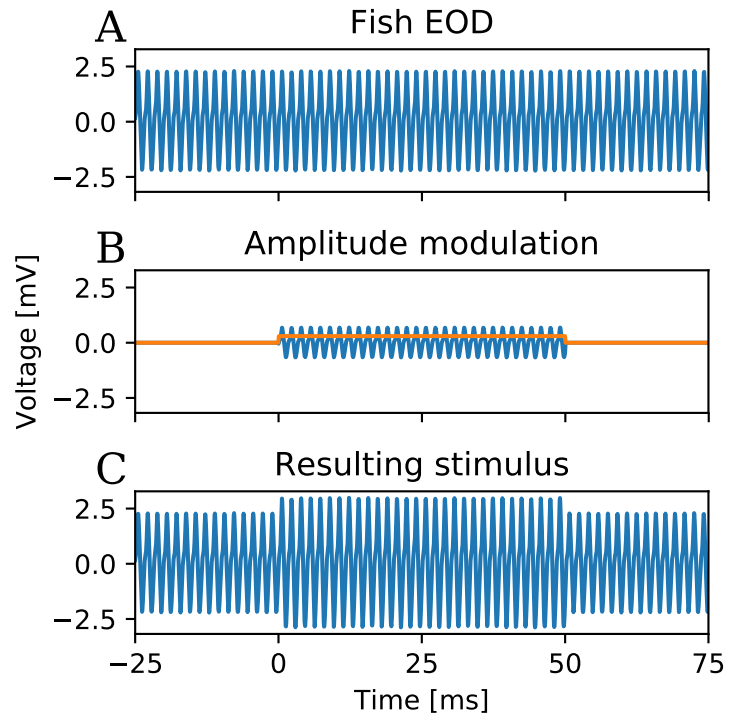
4.2 Stimulus Protocols

The stimuli used during the recordings were presented from two vertical carbon rods (30 cm long, 8 mm diameter) as stimulus electrodes. They were positioned at either side of the fish parallel to its longitudinal axis. The stimuli were computer generated, attenuated and isolated (Attenuator: ATN-01M, Isolator: ISO-02V, npi-electronics, Tamm, Germany) and then send to the stimulus electrodes. For this work two types of recordings were made with all cells: baseline recordings and amplitude step recordings for the frequency-Intensity curve (f-I curve). The 'stimulus' for the baseline recording is purely the EOD field the fish produces itself with no external stimulus.

The amplitude step stimulus here is a step in EOD amplitude. The amplitude modulation (AM) is measured as a contrast. The contrast is calculated by dividing the EOD amplitude during the step by the normal EOD amplitude. To be able to cause a given AM in the fish's EOD, the EOD was recorded and multiplied with the modulation (see fig. 3). This modified EOD can then be presented at the right phase with the stimulus electrodes, causing constructive interference and adding the used amplitude modulation to the EOD (Fig. 3). This stimuli construction as seen in equation 1 works for any AM as long as the EOD of the fish is stable.

$$V_{Stim}(t) = EOD(t)(1 + AM(t)) \quad (1)$$

Figure 3: Example of the stimulus construction. At the top a recording of the fish's EOD. In the middle: EOD recording multiplied with the AM, with a step between 0 and 50 ms to a contrast of 30 % (marked in (TODO: color)). At the bottom the resulting stimulus trace when the AM is added to the EOD. (TODO: Umformulieren add figure labels A, B, C)



All step stimuli consisted of a delay of 0.2 s followed by a 0.4 s ($n=68$) or 1 s ($n=7$) long step and a 0.8 s long recovery time. The contrast range measured was for the most cells 80–120% of EOD amplitude. Some cells were measured in a larger range up to 20–180%. In the range at least 7 contrasts were measured with at least 7 trials, but again many cells were measured with more contrasts and trials. The additionally measured contrasts were used for the model if they had at least 3 trials.

4.3 Cell Characteristics

The cells were characterized by ten parameters: 6 for the baseline and 4 for the f-I curve. For the baseline the mean firing rate was calculated by dividing the number of spikes in the recording by the recording time. Then the set of all interspike intervals (ISI) T was computed and further parameters were calculated from it.

The coefficient of variation

$$CV = \frac{STD(T)}{\langle T \rangle} \quad (2)$$

is defined as the standard deviation (STD) of T divided by the mean ISI, see equation 2 with angled brackets as the averaging operator.

The vector strength (VS) is a measure of how strong the cell locks to a phase of the EOD. It was calculated as seen in Eq. 3, by placing each spike on a unit circle depending on the relative spike time t_i of how much time has passed since the start of the current EOD period in relation to the EOD period length. This set of vectors is then averaged and the absolute value of this average vector describes the VS. If the VS is zero the spikes happen equally in all phases of the EOD while if it is one all spikes happen at the exact same phase of the EOD.

$$vs = \left| \frac{1}{n} \sum_n e^{i\omega t_i} \right| \quad (3)$$

The serial correlation with lag k (SC_k) of T is a measure how the ISI T_i (the i -th ISI) influences the T_{i+k} the ISI with a lag of k intervals. This is calculated as,

$$SC_k = \frac{\langle (T_i - \langle T \rangle)(T_{i+k} - \langle T \rangle) \rangle}{\sqrt{\langle (T_i - \langle T \rangle)^2 \rangle} \sqrt{\langle (T_{i+k} - \langle T \rangle)^2 \rangle}} \quad (4)$$

with the angled brackets again the averaging operator.

Finally the ISI-histogram was calculated within a range of 0–50 ms and a bin size of 0.1 ms. The burstiness was calculated as the percentage of ISI smaller than 2.5 EOD periods multiplied by the average ISI. This gives a rough measure of how often a cell fires in the immediately following EOD periods compared to its average firing frequency.

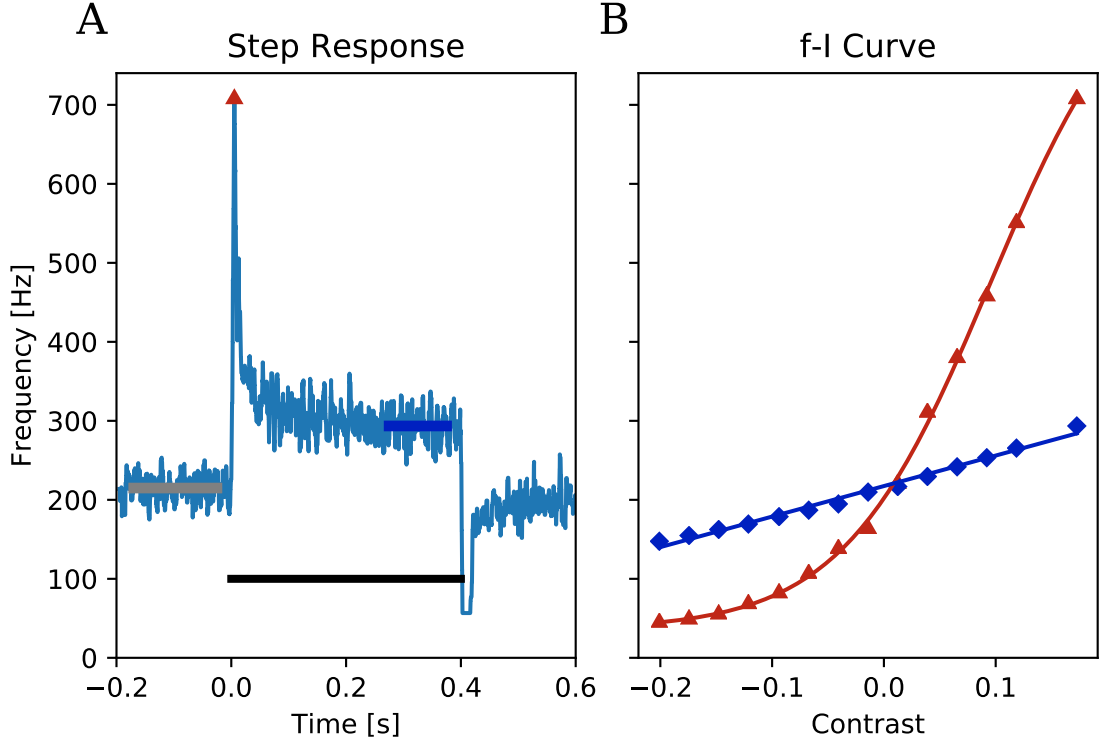


Figure 4: **A:** The averaged response of a cell to a step in EOD amplitude. The step of the stimulus is marked by the black bar. The detected values for the onset (f_0) and steady-state (f_∞) response are marked in (TODO: color). f_0 is detected as the highest deviation from the mean frequency before the stimulus while f_∞ is the average frequency in the 0.1 s time window, 25 ms before the end of the stimulus. **B:** The f-I curve visualizes the onset and steady-state response of the neuron for different stimuli contrasts. In (TODO: color) the detected onset responses and the fitted Boltzmann, in (TODO: color) the detected steady-state response and the linear fit.

As already mentioned in the introduction, p-units react to a step in EOD amplitude with a strong onset response decaying back to a steady state response (fig. 4 A). This adaption behavior of the cell was characterized by the f-I curve measurements. First the ISI frequency trace for each stimulus was calculated. The ISI frequency of a time point t is defined as $1/T_i$ with T_i the ISI the time point t falls into. This gives a frequency trace starting with the first spike and ending at the last spike. For further analysis all trials of a specific contrast were averaged over the trials with the resolution of the sampling rate. This results in a trial-averaged step response for each contrast as illustrated in figure 4 A. In this firing frequency trace the baseline frequency, the onset f_0 and steady-state f_∞ response were detected. The baseline frequency was measured as the mean of the firing frequency 25 ms after recording start up to 25 ms before the stimulus start. f_0 was then defined as the largest deviation from the baseline frequency, within the first 25 ms after stimulus onset. If there was no deviation farther than the minimum or maximum before the stimulus start, then the average frequency in that 25 ms time window was used. This approximation made the detection of f_0 more stable for small contrasts and trials with high variation. The f_∞ response was estimated as the average firing frequency in the 100 ms time window ending 25 ms before the end of the stimulus (fig. 4 A). Afterwards a Boltzmann:

$$f_0(I) = (f_{max} - f_{min})(1/(1 + e^{-k*(I-I_0)})) + f_{min} \quad (5)$$

was fitted to the onset response and a rectified line:

$$f_\infty(I) = \lfloor mI + c \rfloor_0 \quad (6)$$

(with $\lfloor x \rfloor_0$ the rectify operator) was fitted to the steady-state responses (fig. 4 B).

4.4 Leaky Integrate-and-Fire Model

The above described cell characteristics need to be reproduced by a simple and efficient model to be able to simulate bigger populations in a reasonable time. The model used in this thesis follows these equations:

$$\tau_m \frac{dV}{dt} = -V + I_{Bias} + \alpha V_{dend} - I_A + \sqrt{2D} \frac{\xi}{\sqrt{\Delta t}} \quad (7)$$

$$\tau_A \frac{dI_A}{dt} = -I_A + \Delta_A \sum \delta(t) \quad (8)$$

$$\tau_{dend} \frac{dV_{dend}}{dt} = -V_{dend} + \lfloor V_{stim} \rfloor_0 \quad (9)$$

Equation 7 describes the leaky dynamics of the membrane voltage with τ_m the membrane time constant, I_{Bias} a bias current, α the cell specific gain factor for V_{dend} the input voltage coming from the dendrite. $\sqrt{2D}$ is the strength of the normal distributed noise ξ . I_A is an adaption current with the dynamics of equation 8. τ_A is the time constant of the adaption, Δ_A its strength and $\delta(t)$ is the spike train of the cell. Equation 9 shows the dynamics of the synapse and dendrite with τ_{dend} the time constant of the dendrite and $\lfloor V_{stim} \rfloor_0$ the rectified stimulus given. Finally the model also includes a refractory period t_{ref} , not shown in above equations, that keeps the membrane voltage V at zero for its duration.

To arrive at this model the simplest commonly used neuron model the perfect integrate-and-fire (PIF) model was stepwise extended. The PIF's voltage can be described in one equation: $\tau_m \frac{dV}{dt} = \frac{I}{R_m}$ with I the stimulus current, R_m the membrane resistance and a voltage threshold V_θ . In this model I is integrated and when this threshold θ is reached the voltage is reset to zero and a spike is recorded (see fig. 5 PIF). The model is useful for basic simulations but cannot reproduce the richer behavior of the p-units, as it has no memory of previous spikes so it cannot show any adaption behavior and it is also very strongly locked to its limit cycle producing very constant ISI, not allowing the firing flexibility of the p-units.

The next slightly more complex model is the leaky integrate-and-fire (LIF) model:

$$\tau_m \frac{dV}{dt} = -V + IR_m \quad (10)$$

As the name suggests it adds a leakage current to the PIF (fig. 5 LIF). The leakage current adds sub threshold behavior to the model and allows for some more flexibility in suprathreshold firing but it is still not flexible enough and cannot reproduce the adaption.

To reproduce the adaption behavior the model needs some form of memory of previous spikes. There are two main ways this can be added to the model as an adaptive current or a dynamic threshold. The biophysical mechanism of the adaption in p-units is unknown because the cell bodies are not accessible for intra-cellular recordings. Following the results of Benda et al. (2010) a negative adaptive current was chosen, because the dynamic threshold causes divisive adaption instead of the subtractive adaption of p-units seen in Benda et al. (2005). This results in an leaky integrate-and-fire model with adaption current (LIFAC) (fig. 5 LIFAC). The added adaptive current follow the dynamics:

$$\tau_A \frac{dI_A}{dt} = -I_A + \Delta_A \sum \delta(t) \quad (11)$$

and gets subtracted from the input current I of the voltage dynamics eq. 10. It is modeled as an exponential decay with the time constant τ_A and an adaption strength Δ_A . Δ_A is multiplied with the sum of spikes t_i in the spike train ($\delta(t_i)$) of the model cell. For the simulation using the Euler integration this results in an increase of I_A by $\frac{\Delta_A}{\tau_A}$ at every time step where a spike is recorded. (TODO: image of model simulation with voltage adaption and spikes using the toy model?) The input current I from equation 10 is a sum of those two currents and an additional bias current I_{Bias} that is needed to adjust the cells spontaneous spiking:

$$I = \alpha I_{Input} - I_A + I_{Bias} \quad (12)$$

Note that in this p-unit model all currents are measured in mV because, as mentioned above, the cell body is not accessible for intra-cellular recordings and as such the membrane resistance R_m is unknown (TODO: ref mem res p-units). The input current I_{Input} is the current of the stimulus, an amplitude modulated sine wave mimicking the frequency EOD. This stimulus is then rectified to model the receptor synapse and low-pass filtered with a time constant of τ_{dend} to simulate the low-pass filter properties of the dendrite (fig. 6) according to:

$$\tau_{dend} \frac{dV_{dend}}{dt} = -V_{dend} + [I_{Input}]_0 \quad (13)$$

Afterwards it is multiplied with α a cell specific gain factor. This gain factor has the unit of cm because the I_{Input} stimulus represents the EOD with a unit of mV/cm.

Finally, noise and an absolute refractory period were added to the model. The noise ξ is drawn from a Gaussian noise distribution and divided by $\sqrt{\Delta t}$ to get a noise which autocorrelation function is independent of the simulation step size Δt . The implemented form of the absolute refractory period t_{ref} keeps the model voltage at zero for the duration of t_{ref} after a spike. This gives us the full model described in equations 7–9.

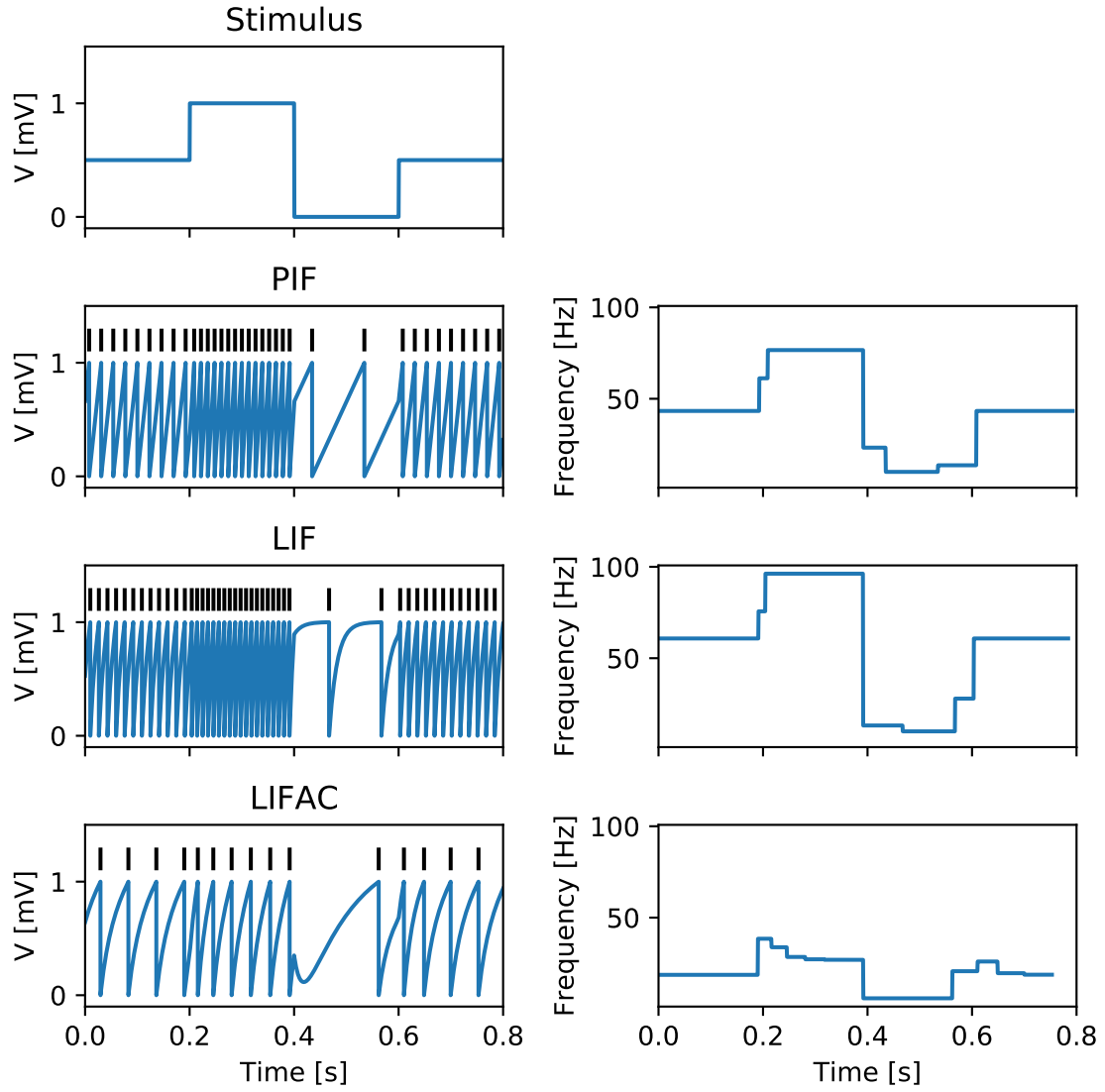


Figure 5: Comparison of different simple models normed to a spontaneous firing rate of 10 Hz stimulated with a step stimulus. In the left column y-axis in mV in the right column the y-axis shows the frequency in Hz. PIF: Shows a continuously increasing membrane voltage with a fixed slope and as such constant frequency for a given stimulus strength. LIF: Approaches a stimulus dependent membrane voltage steady state exponentially Also has constant frequency for a fixed stimulus value. LIFAC: Exponentially approaches its new membrane voltage value but also shows adaption after changes in the stimulus the frequency takes some time to adapt and arrive at the new stable value.

Together this results in the dynamics seen in equations 7–9.

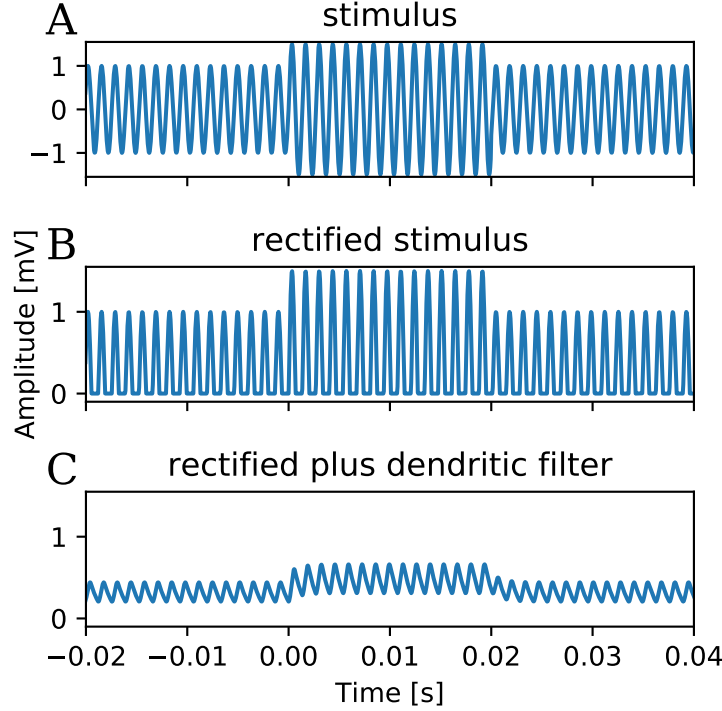


Figure 6: The stimulus modification in the model. The fish’s EOD is simulated with a sin wave. It is rectified at the synapse and then low-pass filtered in the dendrite.

parameter	explanation	unit
α	stimulus scaling factor	[cm]
τ_m	membrane time constant	[ms]
I_{Bias}	bias current	[mV]
$\sqrt{2D}$	noise strength	[mV \sqrt{s}]
τ_A	adaption time constant	[ms]
Δ_A	adaption strength	[mVms]
τ_{dend}	time constant of dendritic low-pass filter	[ms]
t_{ref}	absolute refractory period	[ms]

Table 1: Overview about all parameters of the model that are fitted.

4.5 Fitting of the Model

The full model has, as described above, eight parameters that need to be fitted so it can reproduce the behavior of the cell. During the fitting and the analysis all models were integrated with at time step of 0.05 ms. The stimuli described in the stimulus protocols section above were recreated for the stimulation of the model during the fitting process. The pure fish EOD was approximated by a simple sine wave of the appropriate frequency, but it was decided to keep the amplitude of the sine wave at one to make the models more comparable. Changes in the amplitude can be compensated for by changing the input scaling factor so there is no qualitative difference.

During the fitting the baseline stimulus was simulated 3 times with 30 s each and the step stimuli were simulated with a delay, step duration and recovery time of each 0.5 s. The contrasts were the same as in the cell recordings. The step stimuli for the different

contrasts were each repeated 8 times. The simulated data was analyzed in the same way as the cells (see above).

The error function was constructed from both the baseline characteristics: VS, CV, SC, ISI-histogram and burstiness and the f-I curve: the detections of f_{inf} and f_0 responses for each contrast, the slope of the linear fit into the f_{inf} and the frequency trace of one step response.

The error of the VS, CV, SC, and burstiness was calculated as the scaled absolute difference:

$$err_i = c_i |x_i^M - x_i^C| \quad (14)$$

with x_i^M the model value for the characteristic i , x_i^C the corresponding cell value and c_i a scaling factor that is the same for all cells but different between characteristics. The scaling factor was used to make all errors a similar size. They are listed in table 2.

The error for the slope of the f_{inf} fit was the scaled relative difference:

$$err_i = c_i |1 - ((x_i^M - x_i^C)/x_i^C)| \quad (15)$$

For the f_{inf} and f_0 responses the average scaled difference off all contrasts was taken and finally the error for the ISI-histogram and the step-response was calculated with a mean-square error. For the histogram over all bins but for the step response only the first 50 ms after stimulus onset as an error for the adaption time constant.

$$err_i = c_i (\langle (x_i^M - x_i^C)^2 \rangle) \quad (16)$$

All errors were then summed up for the full error. The fits were done with the simplex algorithm from Nelder and Mead (1965) implemented in the python package Scipy according to Gao and Han (2012). All model variables listed above in table 1 were fit at the same time except for I_{Bias} . I_{Bias} was determined before each fitting iteration and set to a value giving the correct baseline frequency within 2 Hz.

behavior	scaling factor
vector strength	100
coefficient of variation	20
serial correlation	10
ISI-histogram	1/600
f_0 detections	0.1
f_∞ detections	1
f_∞ slope	20
f_0 step response	0.001

Table 2: Scaling factors for fitting errors.

(TODO: Fitting more in detail number of start parameters the start parameters themselves)

5 Results

The here proposed model was, as described above, fit to each in vivo recording of a single P-unit with 12 different start parameters, choosing the best of the 12 resulting fitted models. The resulting 67 fitted models were then filtered for f_0 slope above 50000 and a CV more than 33% different from the cell value. This filtering removed 13 cell-model pairs. 11 were filtered by the CV requirement and 2 by the f_0 slope requirement. This left 54 fitted models for further analysis.

5.1 Model Examples

First the effect of the dendritic low pass filter and the refractory period was investigated. This was done by fitting the model to three cells representing the continuously firing, weakly and strongly bursting cells, while removing the parameter to be investigated e.g. once without the low pass filter and once without a refractory period (fig. 7).

The model without the dendritic low pass filter was able to fit the shape of the ISI histogram even for the strongly bursting cell but was not able to correctly match the height of the distribution. It has very thin peaks which show that this model locks very strongly to the phase of the EOD and cannot match the weaker locking of the cells (fig. 7 A).

When the refractory period of the model is disabled it can still match ISI histogram of the continuously firing cell perfectly but is not able to match the ISI histogram shape for the bursting cells. These cell have more than one local maximum in their histogram. One at the first EOD period caused by the bursts and a second maximum at a latter EOD period showing the times between bursts. The model without t_{ref} is only able to produce a single maximum in their ISI histogram and cannot match the high firing probability at the first EOD period (fig. 7 B).

The full model with both parameters can match both the shape and the height of the full ISI histogram for all three cells shown in figure 7 C, but there are also cases in which the model fails to reproduce the ISI histogram of the cell (fig. 8). The cell A in figure 8 shows a very strongly bursting cell. This cell has a very high peak at the first EOD period and there is some distance to the rest of the ISI distribution. This means that the cell has a few EOD periods in which it doesn't fire after a burst (compare fig. 2 C). The fitted model fails at reproducing the long pauses between the bursts and in this case also shows a too low phase locking. In B the cell shows a high firing probability for the first two EOD periods after a spike and only after that shows the normal distribution (TODO: explain) of firing probabilities. The fitted model does not show the high probability for the first two EOD periods. Instead it has only a high firing probability at the first EOD and a very low probability at the second EOD. The last cell shown in figure 8 has a higher order structure in its ISI histogram. It has high firing probability only at every second EOD period starting at the fourth EOD. This higher order structure is not matched by the model instead it shows a continuously increasing firing probability for each EOD period up to the maximum and then decreases again without being reduced every second EOD.

Comparing the f-I curves of the same three cells as in figure 7 with the f-I curves of their fits shows good agreement for all three (fig. 9), except the steady state response of cell C where the model shows a steeper slope. Note the miss-detections of the f_0 response in the negative contrasts of cell C influencing the fit of the Boltzmann function. The cells also demonstrate the variability of the cells in the strength of their response to the steps stimuli. All fitted models were again inspected and representative failure cases are shown

in figure 10. The fitted model in A overestimates the slope of the steady state response and underestimates the frequency in the lower half of the onset response.

The second example of the problematic cases (fig. 10 B) is a cell with a very high baseline firing rate where the model does not manage to reproduce the plateau the cell quickly reaches for positive contrasts. Instead its the frequency of its onset response continues to increase above the possible range of one spike per EOD period.

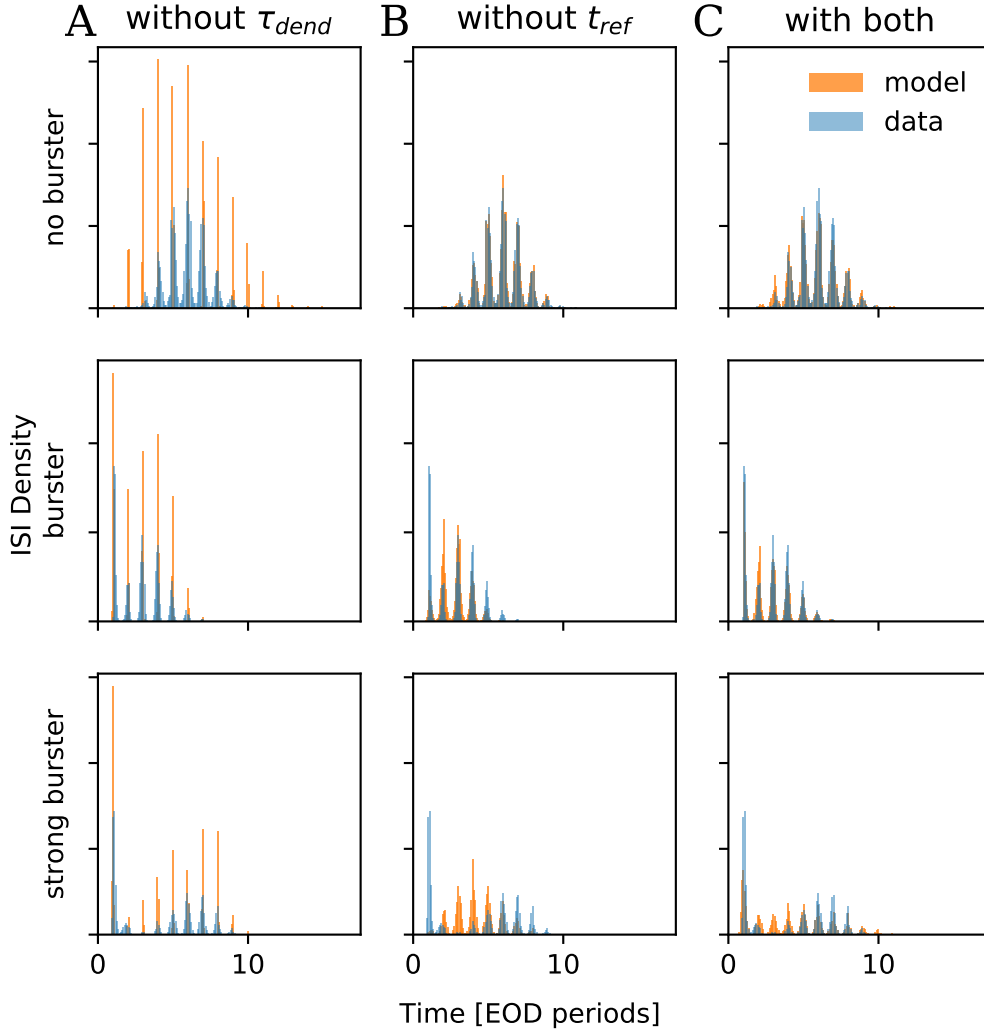


Figure 7: Effect of the dendritic filter and the refractory period on baseline firing. In each row data (blue) and model fits (orange) to three example cells are shown that differ in their burstiness as indicated on the left. Top: cell 2012-12-21-am, $r=135$ Hz, $b=0.02$ %ms; center: cell 2014-03-19-ad-invivo-1, $r=237$ Hz $b=1.69$ %ms; bottom: cell 2014-03-25-aa $r=204$ Hz , $b=1.9$ %ms A: Without dendritic filter (τ_{dend}) the spikes are too strongly locked to the EOD, resulting in very high vector strength and too narrow peaks in the baseline ISI histogram. B: Without refractory period (t_{ref}) the model cannot capture the burstiness. While this is no problem for the non-bursting cell (top), the peak in the ISI histogram at one EOD period cannot be reproduced without refractory period. C: with both the dendritic filter and the refractory period ISI histograms can be faithfully reproduced for all three cells.

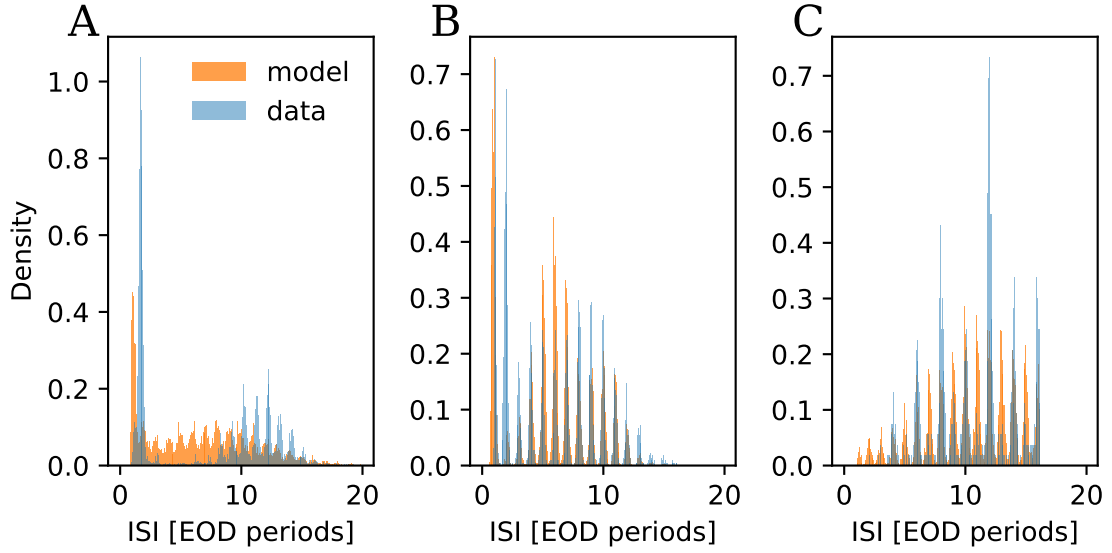


Figure 8: Problem cases in which the model ISI histogram wasn't fit correctly. **A:** (cell 2014-06-06-ag $r=117$ Hz , $b=3.9$) Strongly bursting cell with large pauses between bursts, where the model doesn't manage to reproduce the long pauses. **B:** (cell 2018-05-08-ab $r=112$ Hz , $b=2.8$) Bursting cell with a high probability of firing in the first and second following EOD period. Here the model can't reproduce the high probability on the second following EOD period. **C:** (cell 2014-12-11-ad rate=50 Hz , $b=0$) Cell with a higher order structure in its ISI histogram. It only has a high firing probability every second EOD period which is also not represented in the model.

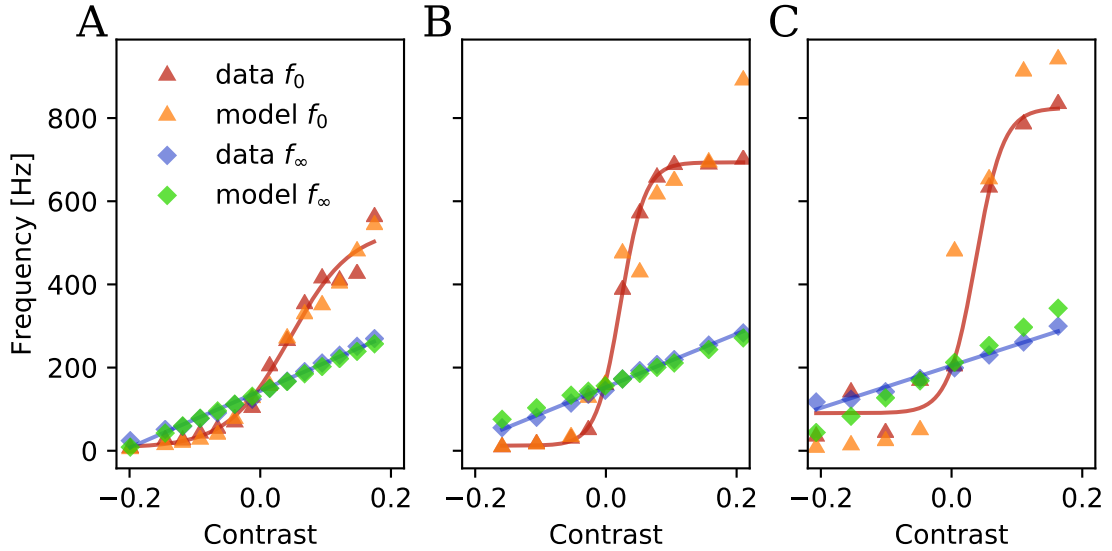


Figure 9: Good fit examples of the f-I curves. The red line fitted Boltzmann function and blue line fitted line for the cell's f_0 and f_∞ response respectively. **A:** cell 2012-12-21-am $r=135$ Hz, EODf=806 Hz; **B:** cell 2014-03-19-ad-in vivo-1 $r=237$ Hz, EODf=658 Hz; **C:** cell 2014-03-25-aa $r=204$ Hz, EODf=870 Hz. The cells show different response strengths to the contrasts. Which are all well matched by their models.

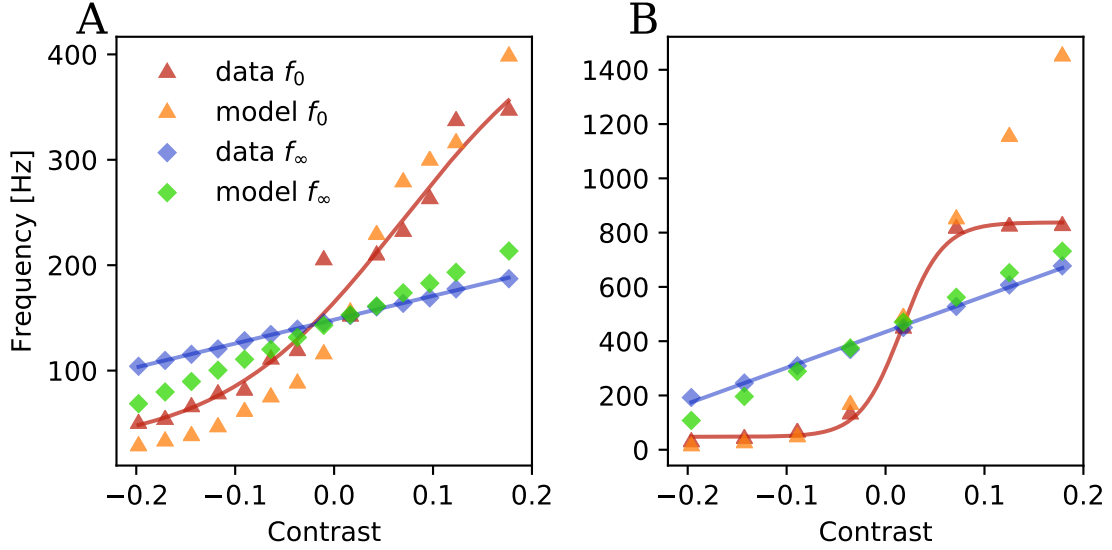


Figure 10: Examples of bad fits of the f-I curves. The red line fitted Boltzmann function and blue line fitted line for the cell's f_0 and f_∞ response respectively. **A:** (cell 2012-12-13-ao $r=146$ Hz, EODf=657 Hz) Model that did not fit the negative contrast responses of the f_0 response well but was successful in the positive half. It also was not successful in the f_∞ response and shows a too steep slope. **B:** (cell 2014-01-23-ab $r=431$ Hz, EODf=775 Hz) A fit that was successful for the lower f_0 response but overshoots the limit of one spike per EOD period. It also has a slightly too steep f_∞ response slope.

5.2 Population Comparison

The general fitting quality was inspected by comparing the distributions in firing behavior between cells and fitted models as well as directly comparing each cell and its respective model. The baseline rate was matched perfectly (fig. 11 A) because it was set to be equal within 2 Hz during the fitting procedure by adjusting the bias current I_{Bias} appropriately. Its approximately log-normal distribution was in the expected range of around 50–400 Hz of the literature (Gussin et al., 2007).

The vector strength (VS) was matched quite well. Many cells have a VS of around 0.85 and with a few cells having a VS as low as 0.5. The fitted models show the same range of VSs but for cells with a VS above 0.8, the models often underestimating the true VS.

The models failed too fit the full breadth of the serial correlation shown by the cells, that have serial correlations between -0.8– -0.1. The fits fail to match the strong negative SCs and reducing the range on the lower end to -0.7. The fits of the SC also show a high variability.

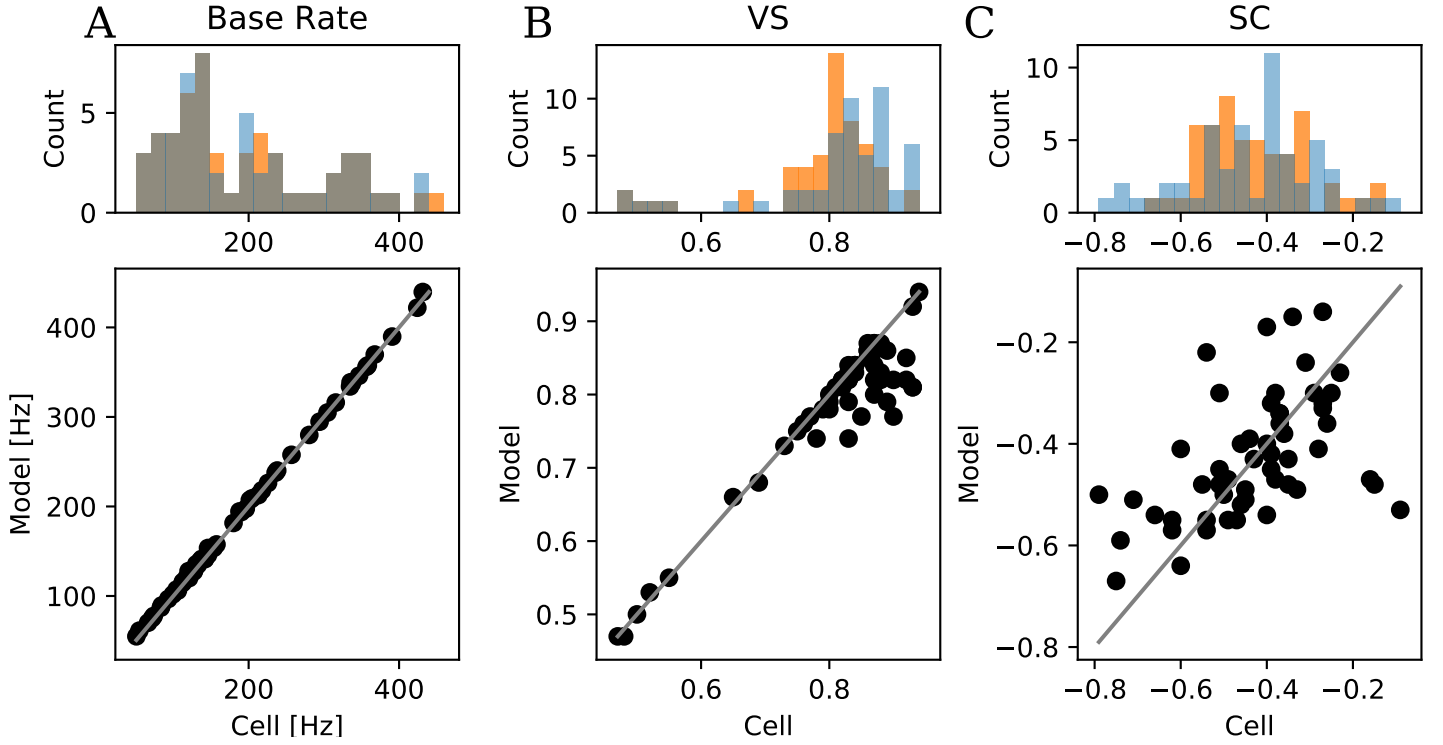


Figure 11: Comparison of baseline firing properties between cells and their corresponding fits. The histograms on top compare the distributions of the $n=54$ cells in blue and their respective models in orange. The scatter plot at the bottom directly compares them. Points on the identity line (grey) indicate perfect model predictions. **A:** The baseline firing rate of the cell and the model. The base rate agrees near perfectly as it is set to be equal within a margin of 2 Hz during the fitting process. **B:** The vector strength agrees well for most cells but for some cells with a VS above 0.8 the models to show a weaker VS than the cell. **C:** The models fail to show the same strong negative SC at lag 1. this effect gets stronger the more the SC deviates from -0.4.

The last two baseline firing behaviors are the burstiness and the coefficient of variation (CV) and both were fit quite similar, because both are correlated as shown below in figure 14 and by the color coding by the computed cell burstiness of the scatter plot (fig. 12). The model fits lower half of them well but doesn't manage to match the high values, where it consistently underestimates the corresponding value. The cells' burstiness distribution has two peaks: the continuously firing cells around 0 and the bursting cells around 2. These two main peaks are still fit quite well but the rare very strongly bursting cell is not matched by the model, but this may be an artifact of how burstiness was defined here, as the ISI histograms seem to contain a full continuum between regular firing as seen in fig. 2 A and the strongly bursting cells as in C. The covariance is distributed more evenly but still shows the two peaks seen in the burstiness measure.

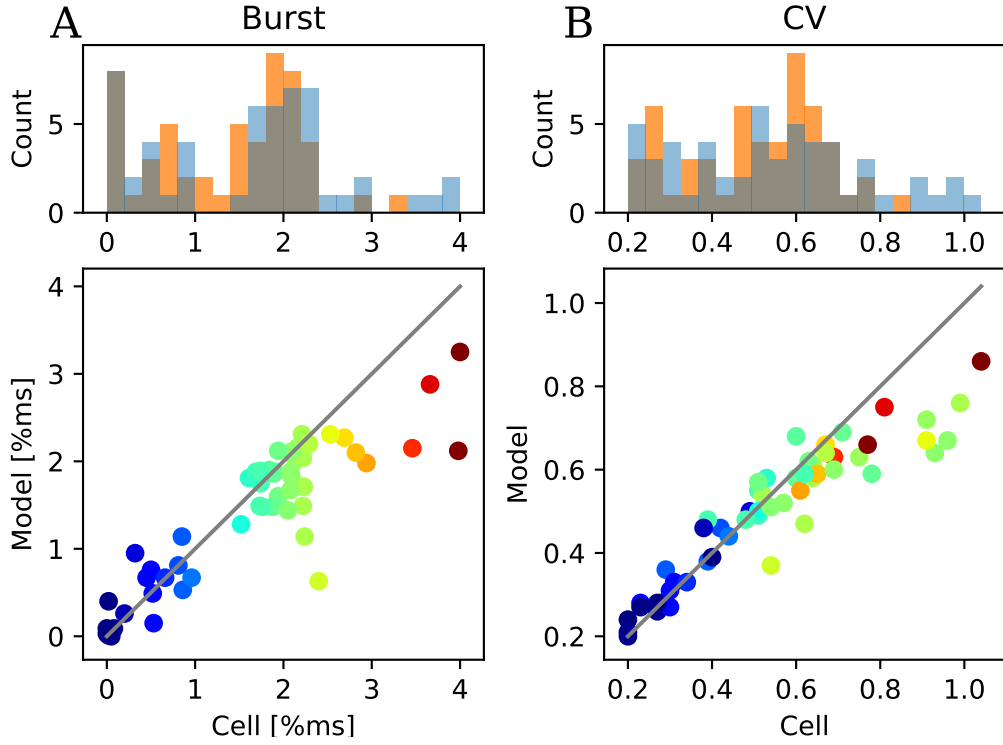


Figure 12: Comparison of baseline bursting properties between cells and their corresponding fits. The histograms on top compare the distributions of the $n=54$ cells in blue and their respective models in orange. The scatter plot at the bottom directly compares them. Points on the identity line (grey) indicate perfect model predictions. **A**: The model values for the burstiness agree well with the values of the model but again show a tendency that the higher the value of the cell the more the model value is below it. **B**: The CV also shows the problem of the burstiness but the values drift apart more slowly starting around 0.6.

The models were able to fit the steady state response of the cells very well (13 A). There are fluctuations but they are even so there is no strong bias in one direction. Most cells react to a 10% increase in EOD amplitude with around an increase of their firing frequency of around 40 Hz. The fit of the onset response characterized by the slope of the Boltzmann function shows very strong fluctuations which make an accurate judgment difficult, as even with these large differences the quality of the model is still often decent.

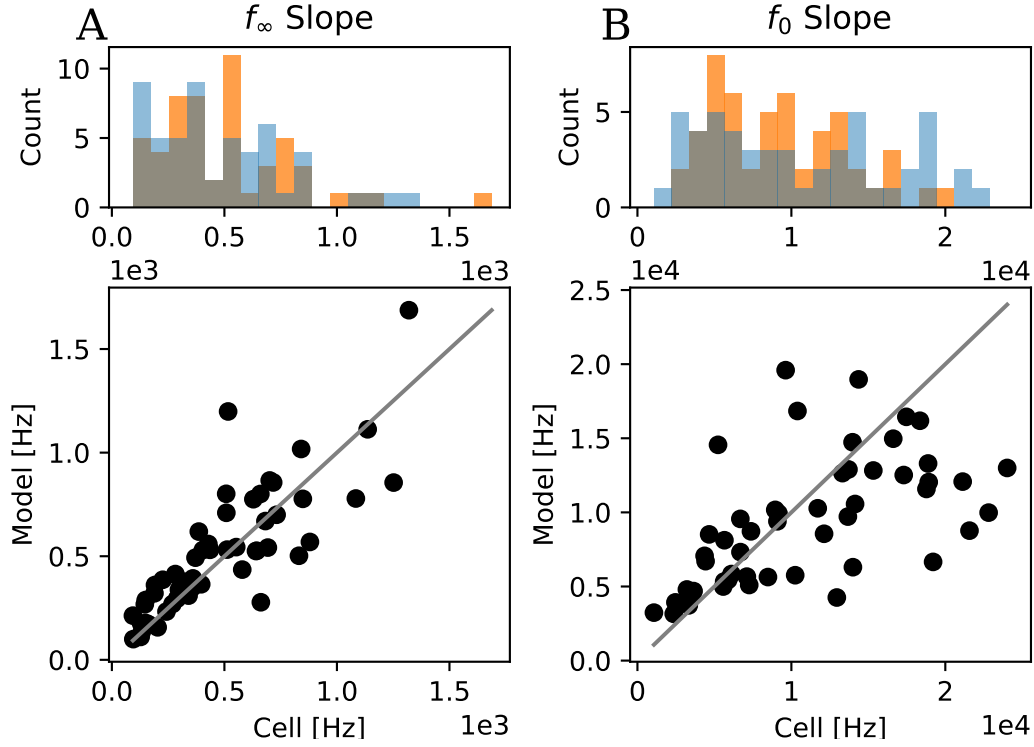


Figure 13: Comparison of adaption properties between cells and their corresponding fits. The histograms on top compare the distributions of the $n=54$ cells in blue and their respective models in orange. The scatter plot at the bottom directly compares them. Points on the identity line (grey) indicate perfect model predictions. **A:** The f_{∞} slope pairs show good agreement with mostly low scattering in both direction. **B** The f_0 values show a higher spread and for steeper slopes the models have more often too flat slopes.

Given the differences in the between the cell firing properties and the ones of the model the correlations between the different firing properties were calculated and show differences (fig. 14). Of the seven correlations found in the data set the fitted models show all except the correlation between the VS and baseline firing rate, but the models also show four additional correlations. These are between the baseline firing rate and the f_0 slope, base rate and burstiness again base rate and SC and between SC and f_{∞} slope.

Before the parameter distributions (fig. 15) and correlations (fig. 16) of the model parameters were closer investigated, the potential influence of the different EOD frequencies was removed by scaling the time dependent parameters for all models. This was done by calculating the factor between the fish's EOD frequency and the chosen EOD frequency of 800 Hz and then multiplying all time parameters appropriately to their dependence with the factor. These scaled parameter distributions are shown in figure 15. With these scaled distributions the correlations between the parameters were computed giving the matrix in figure 16. it shows extensive correlations between most parameters. The correlations indicate that the parameter can compensate for each other and that the model can produce similar firing properties for different parameter sets. A notable exception is the refractory period t_{ref} which is independent of all other parameters and could as such the only variable influencing the burstiness in this model.

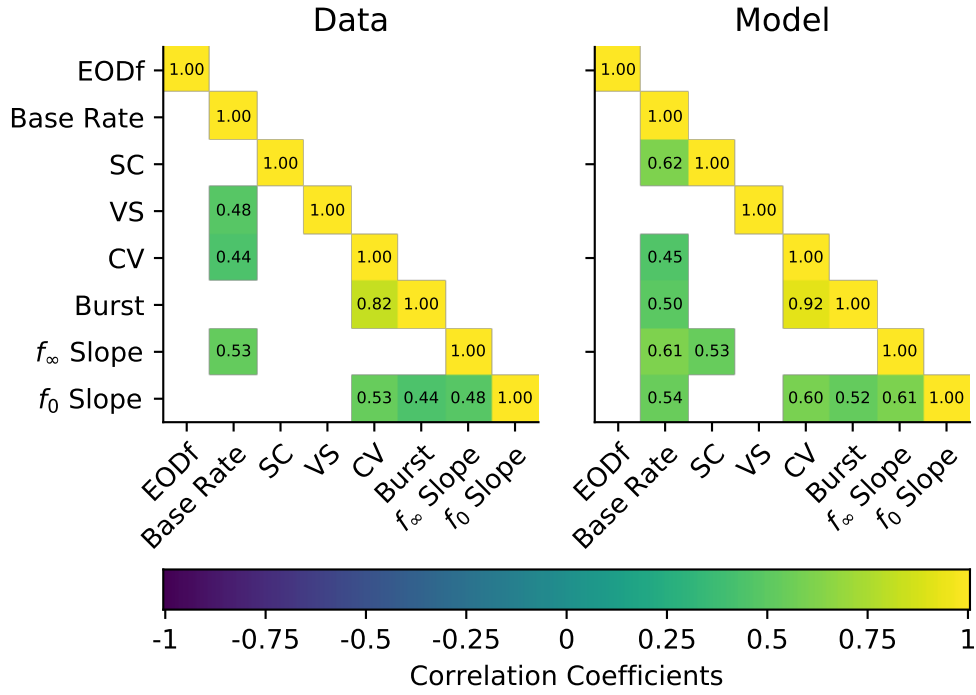


Figure 14: Significant correlations between the firing properties in the data and the fitted models (Significance $p < 0.05$ Bonferroni corrected). The models contain all the same correlations as the data except for the correlation between the baseline firing rate and the VS, but they also show four additional correlations not seen within the cells: bursting - base rate, SC - f_{∞} slope, f_0 slope - base rate, SC - base rate.

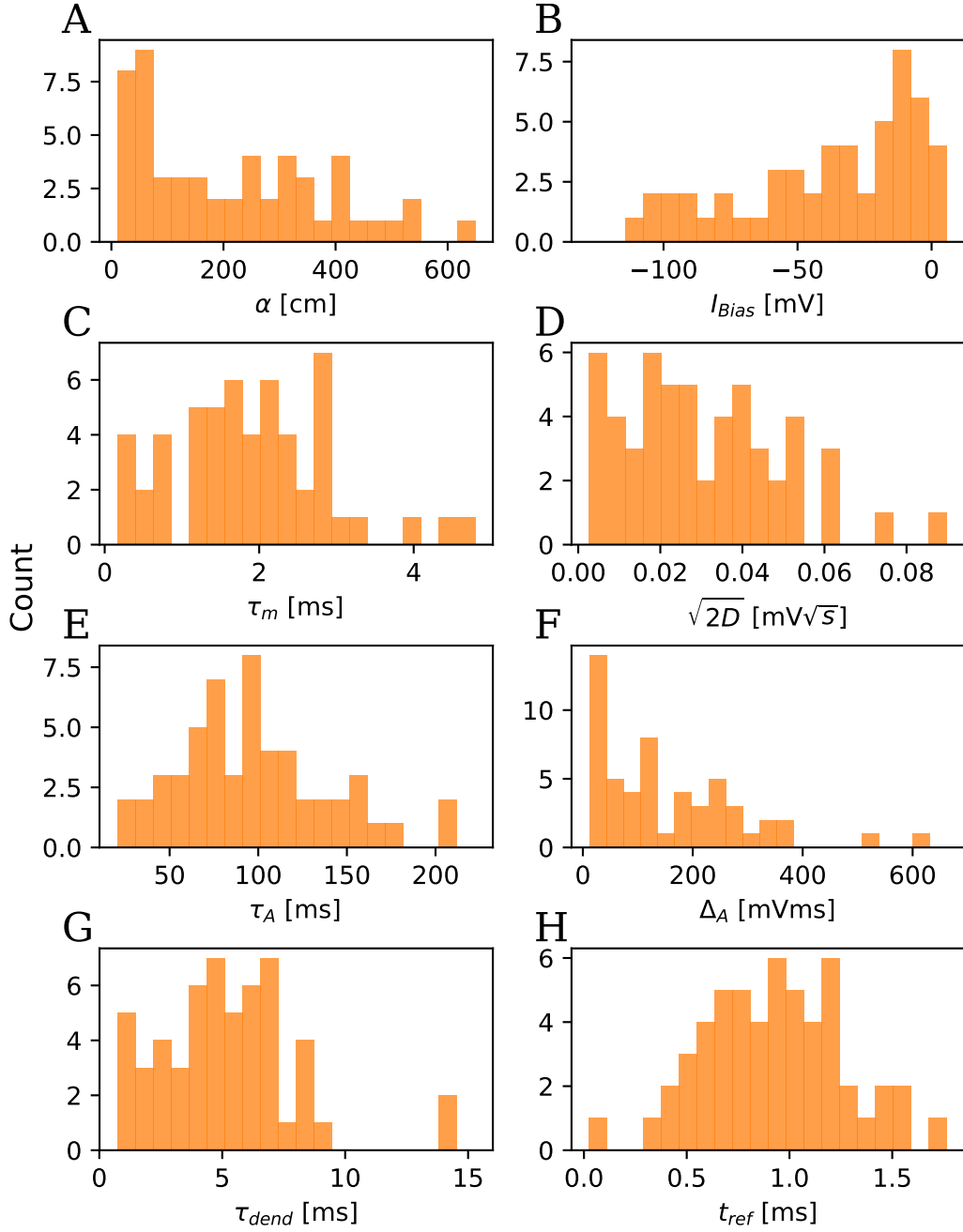


Figure 15: Distributions of all eight model parameters with the time scaled for all models so their driving EOD frequency has 800 Hz. **A:** input scaling α , **B:** Bias current I_{Bias} , **C:** membrane time constant τ_m , **D:** noise strength $\sqrt{2D}$, **E:** adaption time constant τ_A , **F:** adaption strength Δ_A , **G:** time constant of the dendritic low pass filter τ_{dend} , **H:** refractory period t_{ref}

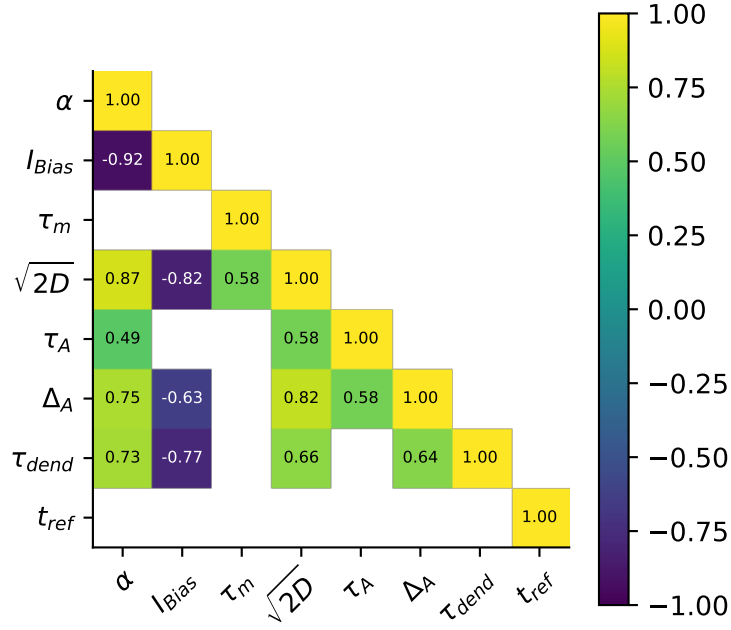


Figure 16: Correlations between model parameters (Significance $p < 0.05$ Bonferroni corrected). The model parameters show many correlation between each other indicating strong compensatory effects where multiple parameter sets can lead to the same firing properties. The only parameter without correlations to any other is t_{ref} showing a certain independence compared to the other parameters.

5.3 Random Model Population

Finally the scaled parameter distributions of the fitted models were used to compute a representative multivariate normal space out of which random parameter sets for the models could be drawn. Each parameter distribution was fit by Gaussian function and then tweaked by hand to remove overly wide Gaussian fits that would produce many parameters outside of the observed distributions (fig. 17). The standard deviation of the fits and the calculated correlations between the parameters were used to compute the covariances. The covariances and the means of the Gaussian fits were then used to compute the multivariate normal space.

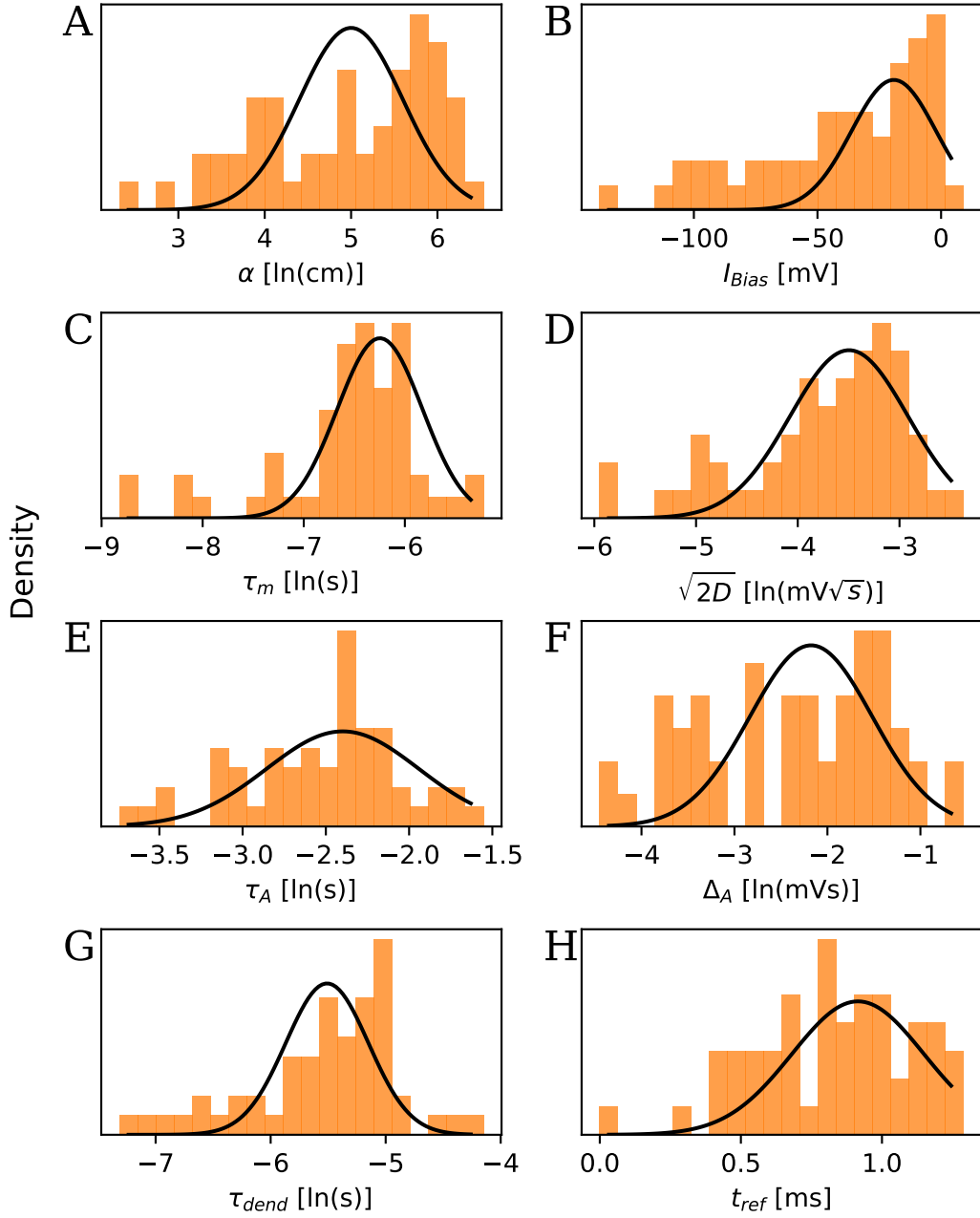


Figure 17: Gaussian fits (black) used as approximations for the parameter distributions. All parameters except for t_{ref} and I_{Bias} were log transformed to get a more Gaussian-like distribution. **A:** Logarithmic input scaling α , **B:** bias current I_{Bias} , **C:** Logarithmic membrane time constant τ_m , **D:** Logarithmic noise strength $\sqrt{2D}$, **E:** Logarithmic adaption time constant τ_A , **F:** Logarithmic adaption strength Δ_A , **G:** Logarithmic time constant of the dendritic low pass filter τ_{dend} , **H:** refractory period t_{ref}

100 parameter sets were drawn their distribution and correlation compared to the parameters of fitted models to verify the drawing. The distributions shown in figure 18 for most parameters good agreement. the distributions of the input scaling α and the adaption strength Δ_A are a bit shifted from the reference distribution and the distribution of the bias current I_{Bias} doesn't show the tail towards negative values. The correlations also showed differences even though they were part of the computation of the multivariate normal space. The drawn parameter sets have 3 missing and one additional correlation. The missing correlations are between τ_{dend} and $\sqrt{2D}$, τ_{dend} and Δ_A and τ_A and α , while the correlation between α and τ_m was only found in the drawn parameter sets. This calculation was repeated a few times during the analysis and these four correlations were inconsistent in the drawn models indicating they may not be well defined in the calculated covariances.

Even with these differences the firing property distributions (fig. 20) shown by the random models show large overlaps. The random models show in the baseline firing rate distribution, that there are too few models with low firing rates and also has a long tail up too 800 Hz which does not match the cells. The serial correlation distribution is shifted towards weaker negative correlations. The worst fit distribution is the VS where the random models have a nearly distinct distribution compared to the cells with a lot lower VS.

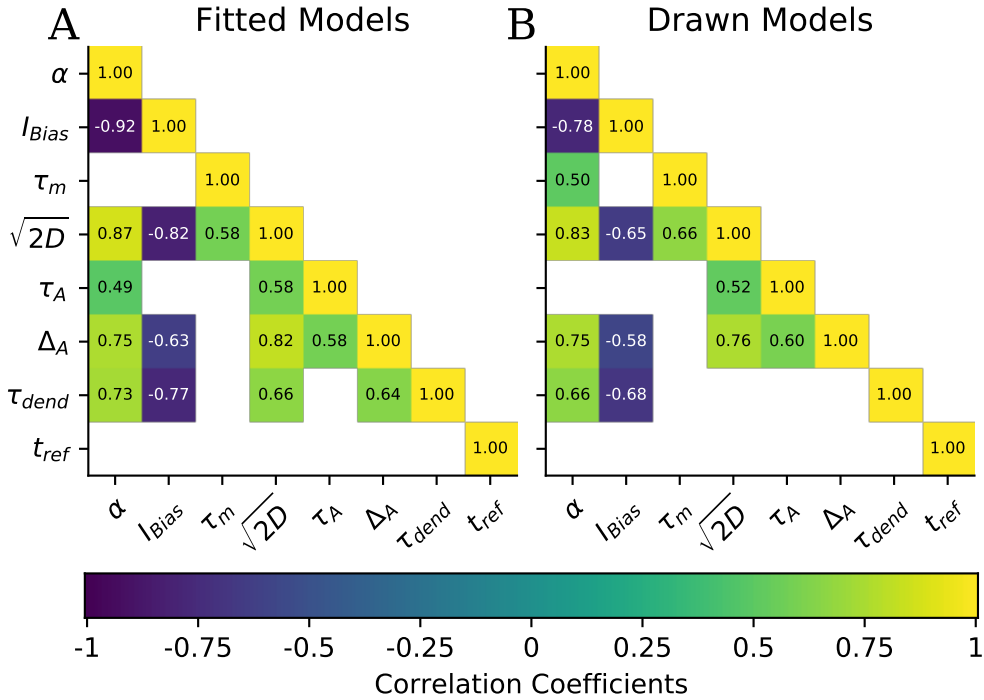


Figure 18: Parameter correlation comparison between the fitted parameters and the ones drawn from the multivariate normal distribution. There are four correlations that do not agree between the two, but those are inconsistent in the drawn models (see discussion).

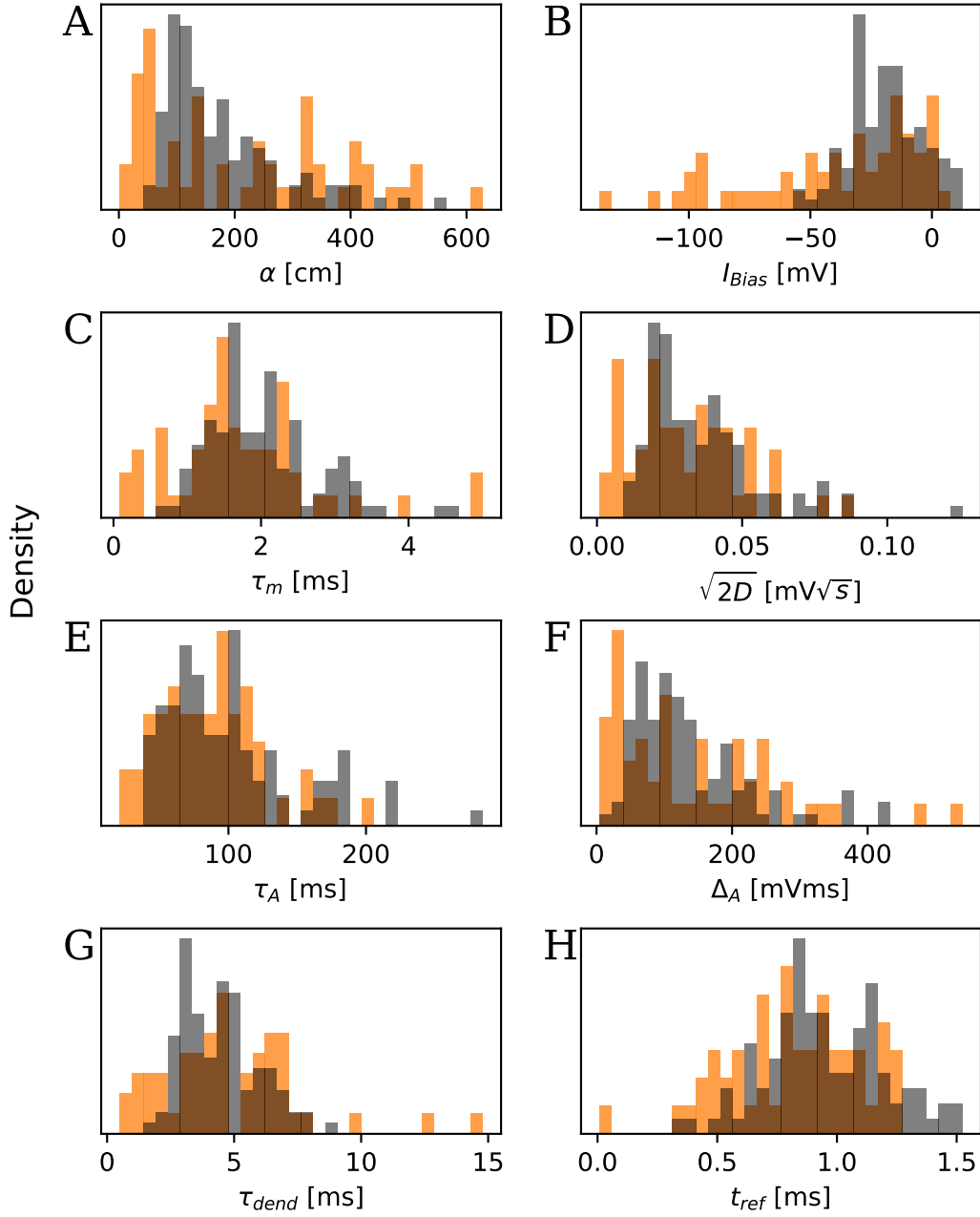


Figure 19: Parameter distribution between randomly drawn models (gray) and the fitted ones (orange). **A:** input scaling α , randomly drawn parameters are shifted to higher values. **B:** Bias current I_{Bias} doesn't match the long tail into the negative. **C:** membrane time constant τ_m , **D:** noise strength $\sqrt{2D}$, **E:** adaption time constant τ_A , **F:** adaption strength Δ_A , **G:** time constant of the dendritic low pass filter τ_{dend} , **H:** refractory period t_{ref}

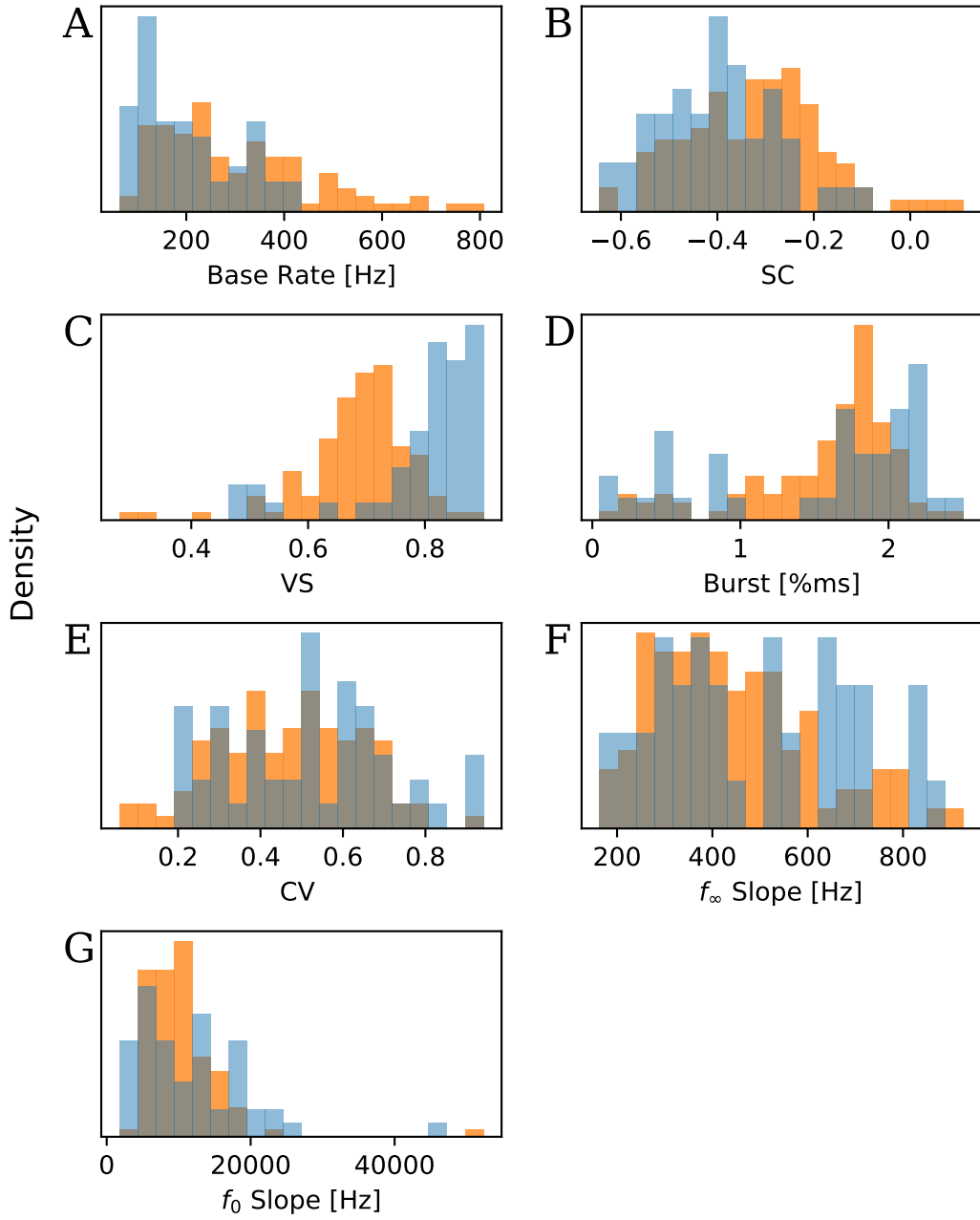


Figure 20: Distribution of firing properties from randomly drawn models (orange) and the original cells (blue). The distribution of the seven firing properties agree well, but especially the vector strength (VS) in **C** is offset to the distribution seen in the cells and shows mainly lower values and the burstiness and SC are also slightly offset.

6 Discussion

In this thesis a simple model based on the leaky integrate-and-fire (LIF) model was developed to allow the simulation of a neuron population that correctly represents the heterogeneity of P-units in the electrosensory pathway of the electric fish *A. leptorhynchus*. The LIF model was extended by an adaption current, a refractory period and simulated the input synapses by rectifying and low pass filtering the input current, building on the model proposed by Walz (2013). This model was then fit to in vivo recordings of single P-units characterized by seven firing properties and the resulting models were compared to their respective reference cell. Additionally estimates of the distributions and covariances of the model parameters were used to draw random parameter sets. Simulations of these generated populations were compared with the data.

(TODO: comparison to the other already existing models)

6.1 Model fit

The dendritic low pass filter and the refractory period were necessary for the model to match the firing behavior of the P-units (fig. 7). As Walz (2013) demonstrated a model without the low pass filter is not able to match the VS and locks too strongly to the EOD. A refractory period t_{ref} is necessary for the model to deviate from the Gaussian firing probability (TODO: explain what that is) and show bursting behavior and is flexible enough to match different strengths of burstiness.

With these additions the behavior of the cells was generally matched well by the models with very similar final distributions of the firing properties but there were some limitations. The model failed to reproduce cells with a very high burstiness (long bursts with long pauses between) or a high coefficient of variation could not fully be matched by the model (TODO: burst or CV not really correct because of the correlation!) (fig. 12). The example of fig. 8 A is a case where the model can show this type firing behavior (long bursts and pauses) but it seems difficult to reach the parameter configuration needed with the fitting approach used. In contrast to that the firing behavior of the cells in fig. 8 B and C are not possible for the model in its current form. The addition of the refractory period t_{ref} does not also allow for an increased firing probability at the 2nd EOD period and the cell C shows a higher order structure in its ISI histogram on a comparatively long timescale which the proposed simple model cannot reproduce. These kind of cells showing higher order structure in their ISI histogram are rare but might provide interesting insights in the physiological properties of P-units when further studied.

Two firing properties had a high spread in the fitted models. In the serial correlation the models had some tendency to underestimate the cell's SC. The second property was the slope of the f_0 response. Here one possible source is that the fitted Boltzmann function and its slope are quite sensitive to miss-detections of spikes. A wrong estimate of the firing frequency for a single contrast can strongly influence the slope of the fitted Boltzmann function. Unlike the baseline firing properties there don't seem to be cases in which the model cannot fit the f-I curves. The problematic cases shown in figure 10 are both generally possible (fig. 9) so improvements in the cost function and fitting routine should also further improve the model consistency for the adaption responses.

Comparing the correlation between the firing properties of the data and the models showed clear discrepancies (fig. 14) with four additional and one missing significant correlation. The added correlation between bursts and baseline firing rate could be a result of the slightly stronger correlations between CV and base rate and between bursts

and CV. The difficulties of the model to fit strongly bursting cells with a long pause between bursts could also have introduced this correlation as these cells would show high burstiness and a low firing rate. The correlation between f_0 slope and base rate might also be caused by a slight increase in the correlations between f_∞ slope and base rate and f_∞ slope and f_0 slope. The other two added correlations are between the SC and the base rate as well as the f_∞ slope, where the former may again caused the latter because of the correlation between f_∞ and base rate. Finally the one missing correlation in the models is the one between base rate and VS, which is an unexpected correlation. This was also looked at in Walz (2013) but only 23 cells were used and they were exclusively non bursting cells which makes a direct comparison difficult. The data there showed the correlation between SC and base rate which is shown by the models in this work. This might indicate that the highest bursting cells that are not fitted well, "remove" this correlation from the population in the data or that there is not enough data to robustly define the correlation.

The parameters of the fitted models also showed extensive correlations between each other. This is an indication of strong compensation effects between them (Olypher and Calabrese, 2007). Which is especially clear for the input gain α and the bias current I_{Bias} that have a nearly perfect correlation and control the models baseline firing rate together. Note that the refractory period t_{ref} is the only completely independent variable. This might show a certain independence between the strength of the burstiness and the other firing characteristics, which could be more closely investigated by looking at the sensitivity of models firing properties to changes in t_{ref} .

6.2 Heterogeneous Population

The correlations and the estimated parameter distributions were used form of their covariances to draw random parameter sets from a multivariate normal distribution. The drawn parameters show the expected distributions but different correlations. That could mean that the 54 models used to calculate them were to few to give enough statistical power for the correct estimation of all correlations. Drawing more models and compensating for the increase in power showed that the involved correlations stay inconsistent, which points to an uncertainty already in the measured covariance matrix of the data. This could be further investigated with a robustness analysis estimating the reliability of the computed covariances.

The firing behavior shown by the drawn models on the other hand fits the ones of the data quite well except for the VS, where it is consistently underestimating the VS of the data.

6.3 Conclusion

In general the model is the first that takes the burstiness as a continuum into account and seems to be able to accurately describe the firing behavior in a large part of the behavior space of the P-units. But further testing is required to get a clearer picture where and why discrepancies exist. An important next step is the verification of the models with a different type of stimulus. For this a stimulus with random or sinusoidal amplitude modulations could be used. The correlations also need further investigation. As a first step a robustness test could be done to estimate if there are correlations that are not well characterized in both the cells and the models.

(TODO: Doesn't cover long timescales described in Gussin 2007??) (TODO: Why do we want such models - analysis of coding in heterogeneous neuron populations, possibility to "measure" responses from whole population at the same time to a single stimulus, separating the different types and analyzing their specific coding properties - finding out why the heterogeneity is necessary!)

(TODO: comparison to existing models Chacron, Waltz, Kashimori what does this model add which the others "missed" don't deliver on.)

References

- Babineau, D., Lewis, J. E., and Longtin, A. (2007). Spatial acuity and prey detection in weakly electric fish. *PLoS Computational Biology*, 3(3):e38.
- Barlow, H. B. et al. (1961). Possible principles underlying the transformation of sensory messages. *Sensory communication*, 1:217–234.
- Bastian, J. (1981). Electrolocation. *Journal of comparative physiology*, 144(4):465–479.
- Benda, J., Longtin, A., and Maler, L. (2005). Spike-frequency adaptation separates transient communication signals from background oscillations. *Journal of Neuroscience*, 25(9):2312–2321.
- Benda, J., Maler, L., and Longtin, A. (2010). Linear versus nonlinear signal transmission in neuron models with adaptation currents or dynamic thresholds. *Journal of Neurophysiology*, 104(5):2806–2820.
- Chacron, M. J., Longtin, A., and Maler, L. (2001). Simple models of bursting and non-bursting p-type electroreceptors. *Neurocomputing*, 38:129–139.
- Chacron, M. J., Longtin, A., and Maler, L. (2004). To burst or not to burst? *Journal of computational neuroscience*, 17(2):127–136.
- Gao, F. and Han, L. (2012). Implementing the nelder-mead simplex algorithm with adaptive parameters. *Computational Optimization and Applications*, 51(1):259–277.
- Gussin, D., Benda, J., and Maler, L. (2007). Limits of linear rate coding of dynamic stimuli by electroreceptor afferents. *Journal of neurophysiology*, 97(4):2917–2929.
- Kashimori, Y., Goto, M., and Kambara, T. (1996). Model of p-and t-electroreceptors of weakly electric fish. *Biophysical journal*, 70(6):2513–2526.
- Maciver, M. A., Sharabash, N. M., and Nelson, M. E. (2001). Prey-capture behavior in gymnotid electric fish: motion analysis and effects of water conductivity. *Journal of experimental biology*, 204(3):543–557.
- Nelder, J. A. and Mead, R. (1965). A simplex method for function minimization. *The computer journal*, 7(4):308–313.
- Olypher, A. V. and Calabrese, R. L. (2007). Using constraints on neuronal activity to reveal compensatory changes in neuronal parameters. *Journal of Neurophysiology*, 98(6):3749–3758.
- Padmanabhan, K. and Urban, N. N. (2010). Intrinsic biophysical diversity decorrelates neuronal firing while increasing information content. *Nature neuroscience*, 13(10):1276–1282.
- Ratnam, R. and Nelson, M. E. (2000). Nonrenewal statistics of electrosensory afferent spike trains: implications for the detection of weak sensory signals. *Journal of Neuroscience*, 20(17):6672–6683.
- Scheich, H., Bullock, T. H., and Hamstra Jr, R. (1973). Coding properties of two classes of afferent nerve fibers: high-frequency electroreceptors in the electric fish, *eigenmannia*. *Journal of Neurophysiology*, 36(1):39–60.

- Todd, B. S. and Andrews, D. C. (1999). The identification of peaks in physiological signals. *Computers and biomedical research*, 32(4):322–335.
- Tripathy, S. J., Padmanabhan, K., Gerkin, R. C., and Urban, N. N. (2013). Intermediate intrinsic diversity enhances neural population coding. *Proceedings of the National Academy of Sciences*, 110(20):8248–8253.
- Walz, H. (2013). *Encoding of Communication Signals in Heterogeneous Populations of Electoreceptors*. PhD thesis, Eberhard-Karls-Universität Tübingen.
- Walz, H., Grewe, J., and Benda, J. (2014). Static frequency tuning accounts for changes in neural synchrony evoked by transient communication signals. *Journal of Neurophysiology*, 112(4):752–765.
- Xu, Z., Payne, J. R., and Nelson, M. E. (1996). Logarithmic time course of sensory adaptation in electrosensory afferent nerve fibers in a weakly electric fish. *Journal of neurophysiology*, 76(3):2020–2032.
- Zeldenrust, F., Wadman, W. J., and Englitz, B. (2018). Neural coding with bursts—current state and future perspectives. *Frontiers in computational neuroscience*, 12:48.
- Zupanc, G., Sîrbulescu, R., Nichols, A., and Ilies, I. (2006). Electric interactions through chirping behavior in the weakly electric fish, *apteronotus leptorhynchus*. *Journal of Comparative Physiology A*, 192(2):159–173.